

CITY IN TIME 城市景昔

Experience CITY IN TIME
Time travel in Hong Kong

Lei Yue Mun Praya Road Central

Lei Yue Mun 鯉魚門

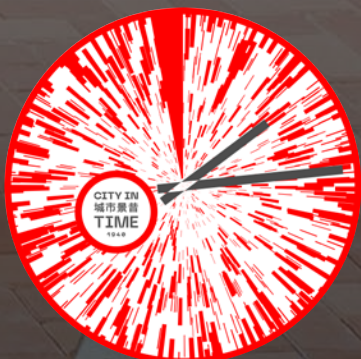
Jockey Club Lei Yue Mun Plus
Cultural Revitalisation at the Village School

Lei Yue Mun Seafood District
Paradise for Seafood Lovers

Lei Yue Mun Tin Hau Temple
City Historical Hidden Gems

CITY IN TIME
Feature

CITY IN
城市景昔
TIME

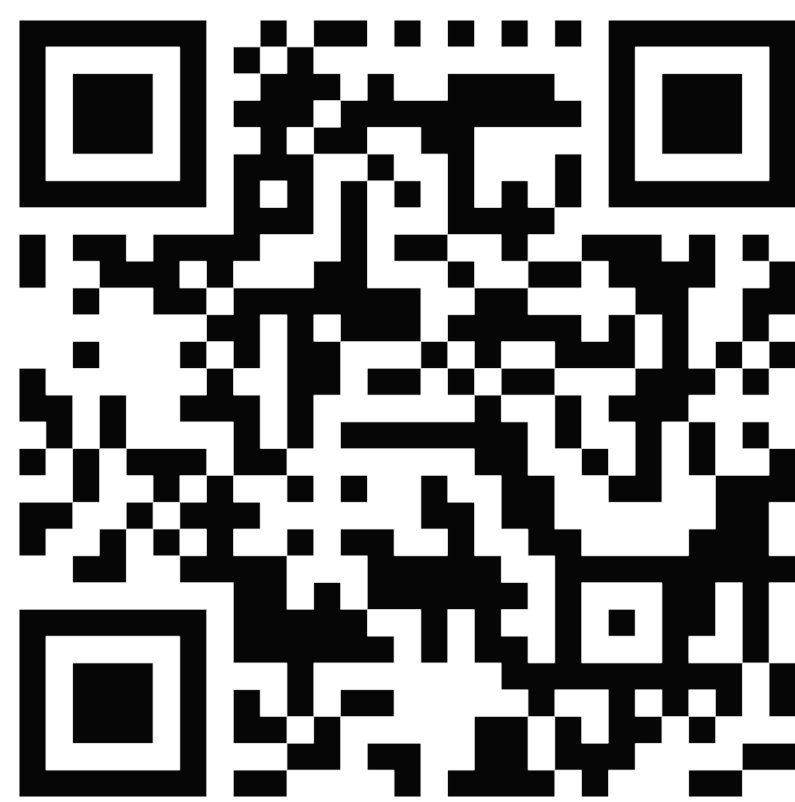


Route

Lei Yue Mun

Lei Yue Mun attracts visitors by the stunning view of Victoria Harbour and delectable seafood. In addition to the incredible view and culinary delights, Lei Yue Mun also boasts a rich history and culture. Download the “CITY IN TIME” mobile app when you visit Lei Yue Mun, join the journey through time and explore the unique heritage and cultural landscape.

Download the
CITY IN
城市景昔
TIME
mobile app



CITY IN TIME AR

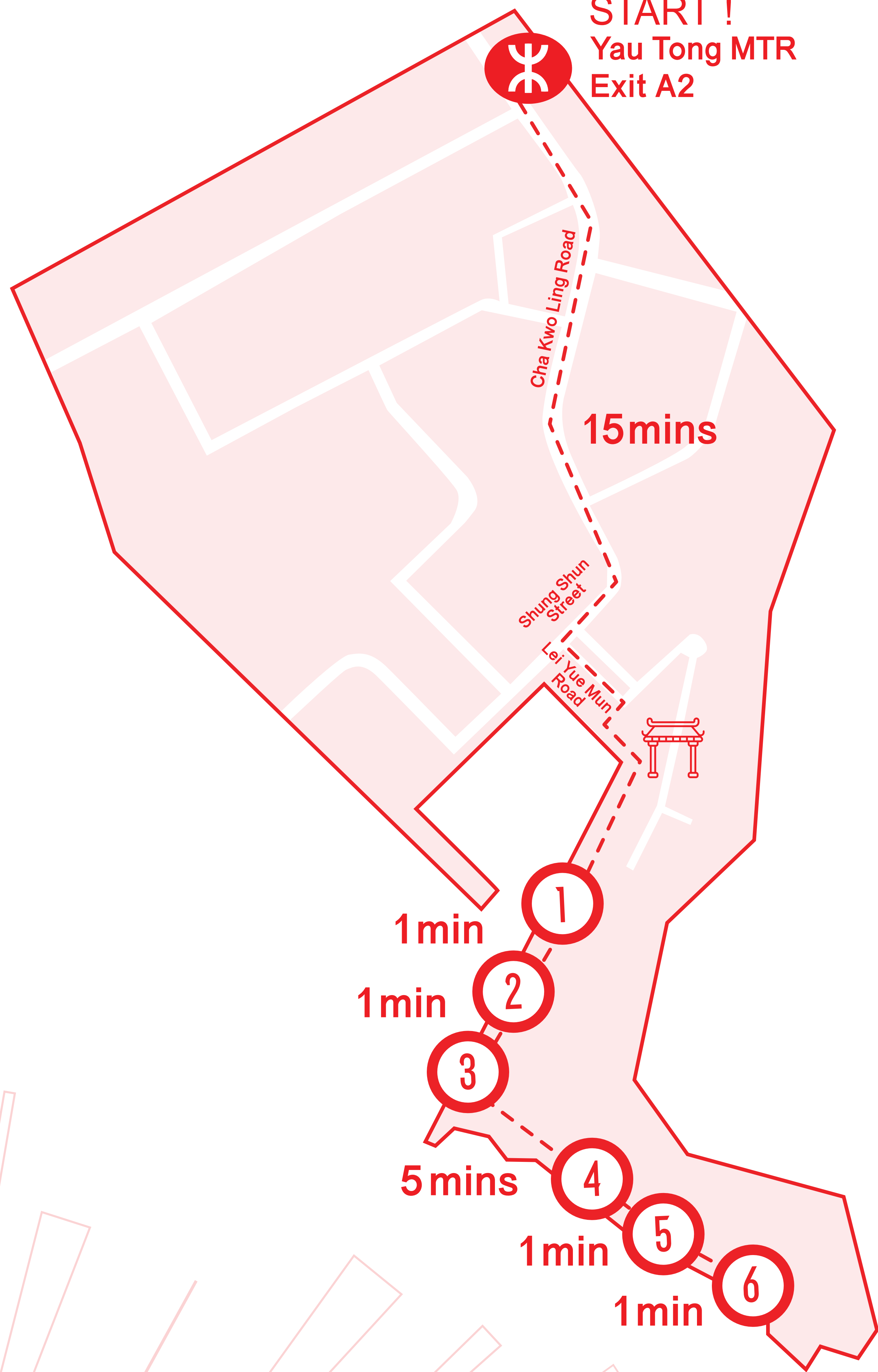


The six AR clocks of “CITY IN TIME” are located at various viewing decks along the Lei Yue Mun waterfront promenade, near attractions such as the Jockey Club Lei Yue Mun Plus, the Seafood Street and the Lighthouse. Follow this guidebook while strolling through Lei Yue Mun, and use the “CITY IN TIME” mobile app to discover the stories behind each attraction.



Lei Yue Mun Map

START !
Yau Tong MTR
Exit A2



- 01 Jockey Club Lei Yue Mun Plus
- 02 Lei Yue Mun Seafood Street
- 03 Lei Yue Mun Lighthouse
- 04 Lyemun Pass
- 05 Ma Wan Tsuen
- 06 Lei Yue Mun Tin Hau Temple



Duration : 24 mins
Distance : 1.5 km

Jockey Club Lei Yue Mun Plus

The Jockey Club Lei Yue Mun Plus (JCLYMP) is dedicated to preserving Lei Yue Mun’s history and culture, offering Lei Yue Mun guided tours, talks, workshops and various cultural activities. It houses Hoi Bun School’s history corridor and cultural walls, and shares with visitors the development of Lei Yue Mun’s quarrying and ceramic industries. On your visit to Lei Yue Mun, stop by the JCLYMP to learn more about the historical and cultural development of this community. Enjoy coffee and food at the coffee shop open on weekends.

Spot 1



Keep an eye on JCLYMP’s social media feeds for the latest guided tours and cultural events updates!



JCLYMP is a revitalised building formerly known as Hoi Bun School, which housed over 500 students. During the graduation ceremony, graduates passed the torch to the next year’s student. The torch is now displayed on the wall of the history corridor to showcase its inheritance symbol. These historical stories of Lei Yue Mun are featured in the “CITY IN TIME” mobile app. Scan the AR clock to know more!

Majestic Chemical Art Craft Manufacture, the largest ceramic factory in Lei Yue Mun, used to be located behind the JCLYMP.



Scan This



**Address : 45 Lei Yue Mun Praya Road
Central, Lei Yue Mun, Kowloon
Year of Establishment : 1946
Opening Hours : Monday - Sunday
(Closed on Tuesday)
10:00am - 6:00pm**

Recommendations

Lei Yue Mun Souvenirs

On the way to the JCLYMP, you will see a few long-established souvenir shops specialised in various tasty snacks. Many offer tastings to make sure you will get what you want. Remember to spare time to shop on your return journey.



Lei Yue Mun Seafood Street

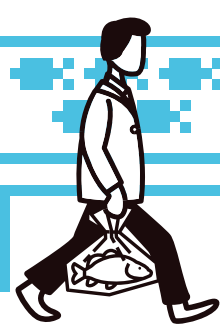
Spot 2

Lei Yue Mun Praya Road Central, also known as Seafood Street, boasts a rich history in the seafood industry dated back to the 1960s. As the quarry industry gradually declined, residents switched to the catering industry, running seafood stalls and restaurants. The seafood industry began to flourish in the 1970s, leading residents to expand the local pier into its present form. This facilitated seafood lovers' access to Lei Yue Mun by sea and even allowed diners to choose fresh catch from seafood boats.

The Seafood Street has changed a lot since the 1970s, but you can revisit it from an AR historical panorama using the “CITY IN TIME” mobile app.



Scan This



Recommendations

Lei Yue Mun Seafood District

The seafood street, packed with seafood stalls and restaurants, is a paradise for seafood lovers. Diners can choose their seafood at the stalls and then have it prepared by their favourite restaurant. Several seafood restaurants also offer authentic seafood dishes with a stunning harbour view.



Spot 3

Lei Yue Mun Lighthouse

Located on the rock south of Sam Ka Tsuen, the No. 88 navigation mark, commonly known as the Lei Yue Mun Lighthouse, is now one of the most photogenic spots in Lei Yue Mun. Built in 1902 to guide ships to navigate in and out of the harbour, the lighthouse was originally shorter and had a black-and-white checkered pattern.

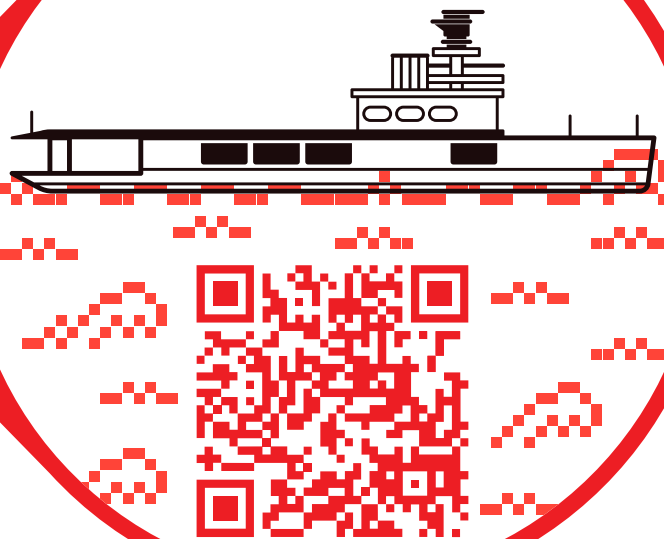
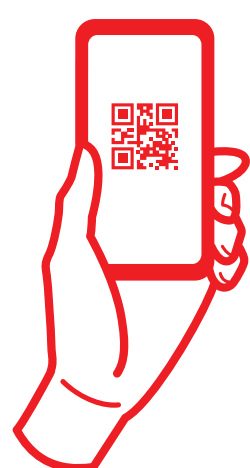
Use the “CITY IN TIME” mobile app to learn more about this historical landmark. The Lei Yue Mun Lighthouse has witnessed numerous historical moments in Hong Kong, including the arrival of the HMS Hermes, the first aircraft carrier to arrive in Hong Kong, in 1925.

Viewing Platform

As part of the recent Lei Yue Mun Waterfront Enhancement Project, a new viewing platform and several key lookout points have been constructed along the promenade. Featuring a modern design, it extends from Lei Yue Mun Rest Garden, providing an elevated platform and access to Oyster Shell Beach. From this vantage point, you can soak up the scenic splendour of the city’s eastern coast and fully immerse yourself in the beauty of nature.



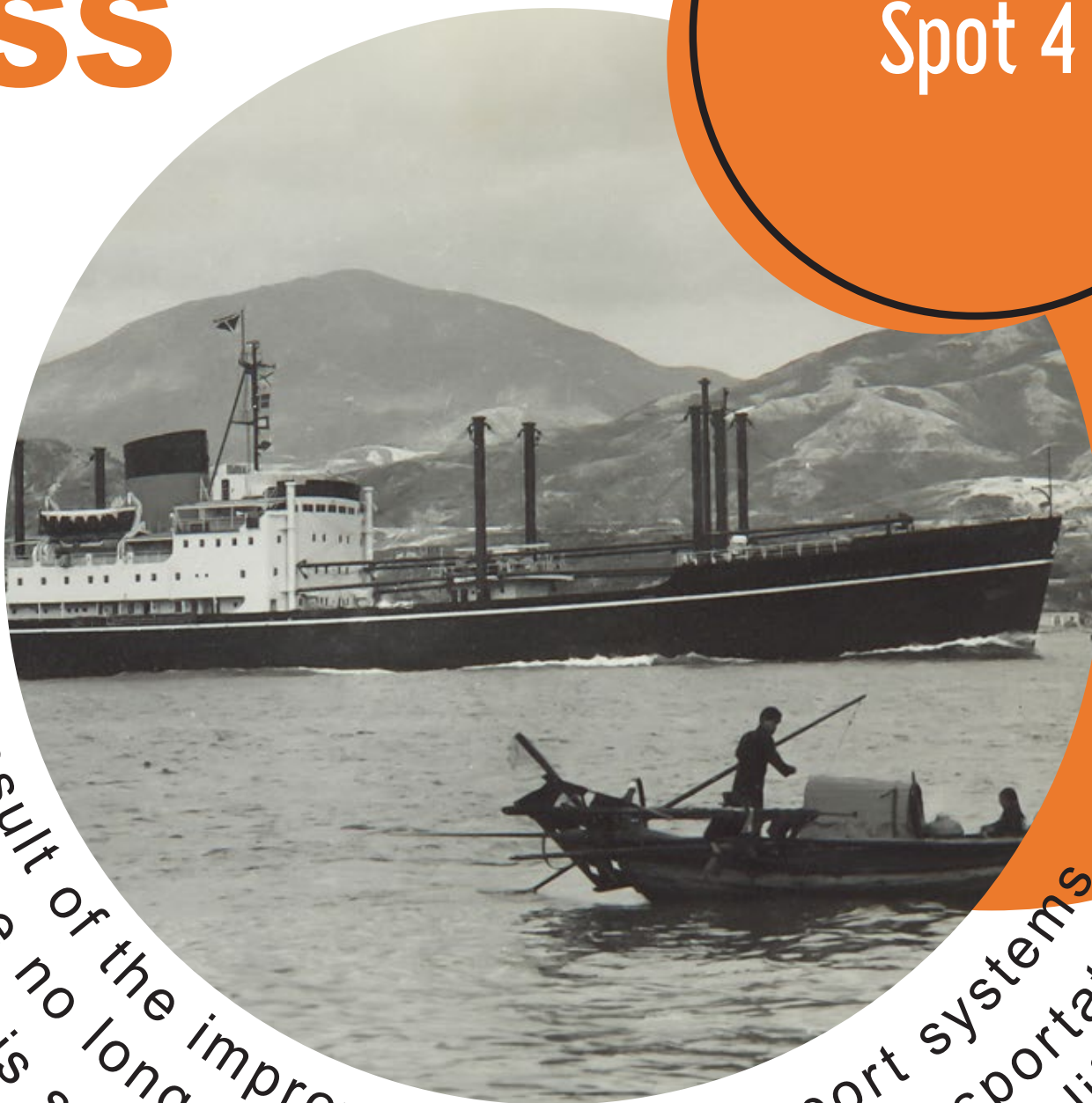
Scan This



Lyemun Pass

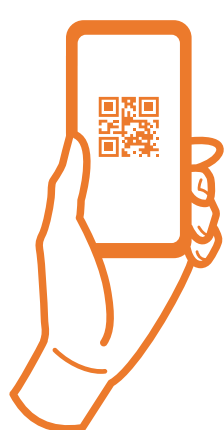
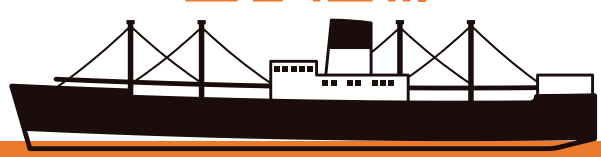
Lyemun Pass is the deepest channel in Victoria Harbour. With an approximately 43-metre depth, it allows most massive merchant and cargo ships to pass through, playing an important role in the development of trade. Use the “CITY IN TIME” mobile app to relive the steamship “Eastern Star” approaching Lyemun Pass in the old days.

Spot 4



As a result of the improvement of transport systems, ferries are no longer the major means of transportation, however it is still a wise choice for a downshifting lifestyle.

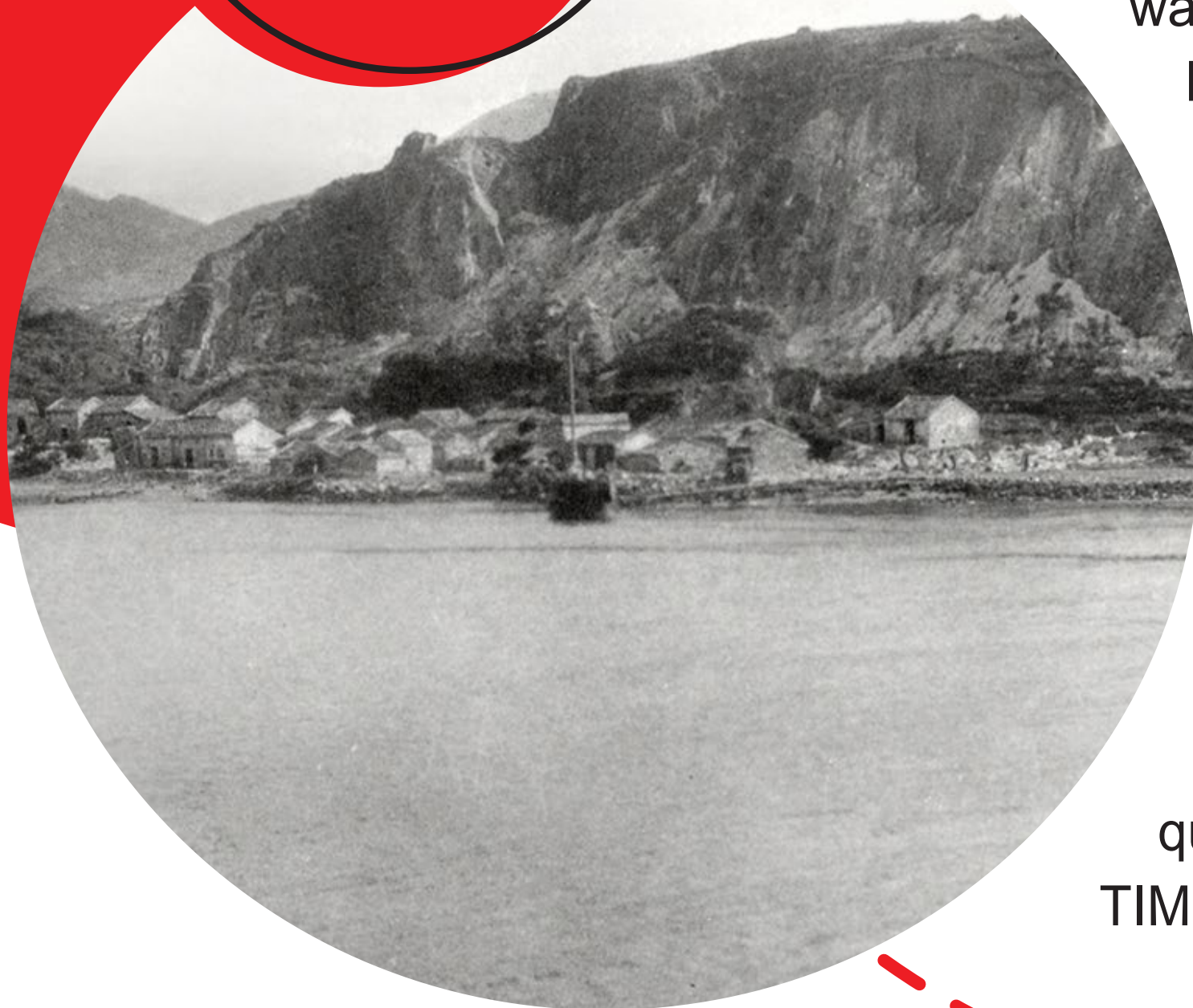
Scan This



Spot 5

Ma Wan Tsuen

Ma Wan Tsuen was formerly known as Ah Ma Wan Tsuen. The village was first named Ah Ma Wan Tsuen as Hakka people called Tin Hau “Ah Ma”, and there was a Tin Hau Temple there. Quarrying was one of the major industries in Lei Yue Mun. There was once a Lei Hing Quarry Company in Ma Wan Tsuen, where quarry workers employed various methods to extract and transport granite stones. These granite stones were well known and were used in the construction of The Court of Final Appeals Building in Hong Kong. Although Lei Yue Mun's quarries closed in the late 1960s, you can still explore its quarry history through the “CITY IN TIME” mobile app.

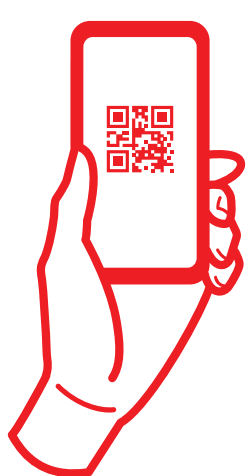


Murals Village

Ma Wan Tsuen's Murals Village is one of the popular attractions in Lei Yue Mun. Passionate volunteers have given new life to the village with colourful murals. These artworks capture the essence of the neighbourhood, featuring iconic landmarks such as the archway, local shops and seafood street. You can also find tales of old Lei Yue Mun on the murals, showcasing scenes of mining operations and the lighthouse faithfully guiding ships along the waterways.



Scan This



Spot 6

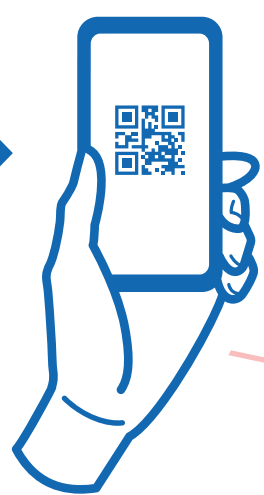
Lei Yue Mun Tin Hau Temple

Lei Yue Mun Tin Hau Temple was established by Qing pirate Zheng Lian-chang and made it as his stronghold in 1753, and was accorded as a Grade 3 Historical Building in 2010. The temple is located by the Lyemun Pass, facing the sea and backed by gigantic stones, making it a rare glimpse of ancient beauty amidst the modern cityscape.

The residents of Lei Yue Mun highly value the Tin Hau Temple. They celebrate the Tin Hau Festival during the fourth lunar month every year. There are three important activities: the Hakka Unicorn Dance, Cantonese opera offerings to deities, and grabbing Fa Pau, which are good means for experiencing authentic Hong Kong culture. The “CITY IN TIME” AR historical panorama showcases the everyday life of residents who used to gather at the Tin Hau Temple.



Scan This



CITY IN TIME

城市眼



All Information records as of June 2024, and is subject to change without prior notice. Hong Kong Tourism Commission disclaims any liability for the quality or fitness for the purpose of third-party products or services; or for any errors or omissions.

© Copyright Hong Kong Tourism Commission 2024